

## Birdhouse Activity

**Age level:** K – 3<sup>rd</sup> grade

**Time required:** 1 hour

**Adult supervision required:** Yes, basic carpentry skills

### Introduction

In this activity children will assemble bluebird houses from precut/predrilled pieces of wood. This example uses scrap pieces of 5" oak flooring with the tongue removed. Pieces can also be fabricated from 1x6 boards. Figure 1 shows the completed birdhouse.

Pro Tip: Groups of bluebirds will winter over in houses with roughened interiors like these oak flooring pieces.



Figure 1. Birdhouse

### Material List

1x6 hard wood	5 ft.
4d galvanized nails	31 ea.
1-5/8" exterior screw	1 ea.

### Tools

Drill w/ 3/32" and 5/32" bit  
1-1/2" hole saw  
Hammers  
Small bar clamps  
Screw driver

## Preassembly Component Fabrication

Before meeting with the children, cut 7 pieces of wood to the dimensions shown in Figures 2 and 3. These are based on using a 1x6 board. If you are using 5" hardwood flooring with the tongue removed, the dimension shown will be 5", and the bottom piece will be 4" x 3½" instead of the 4" square shown.

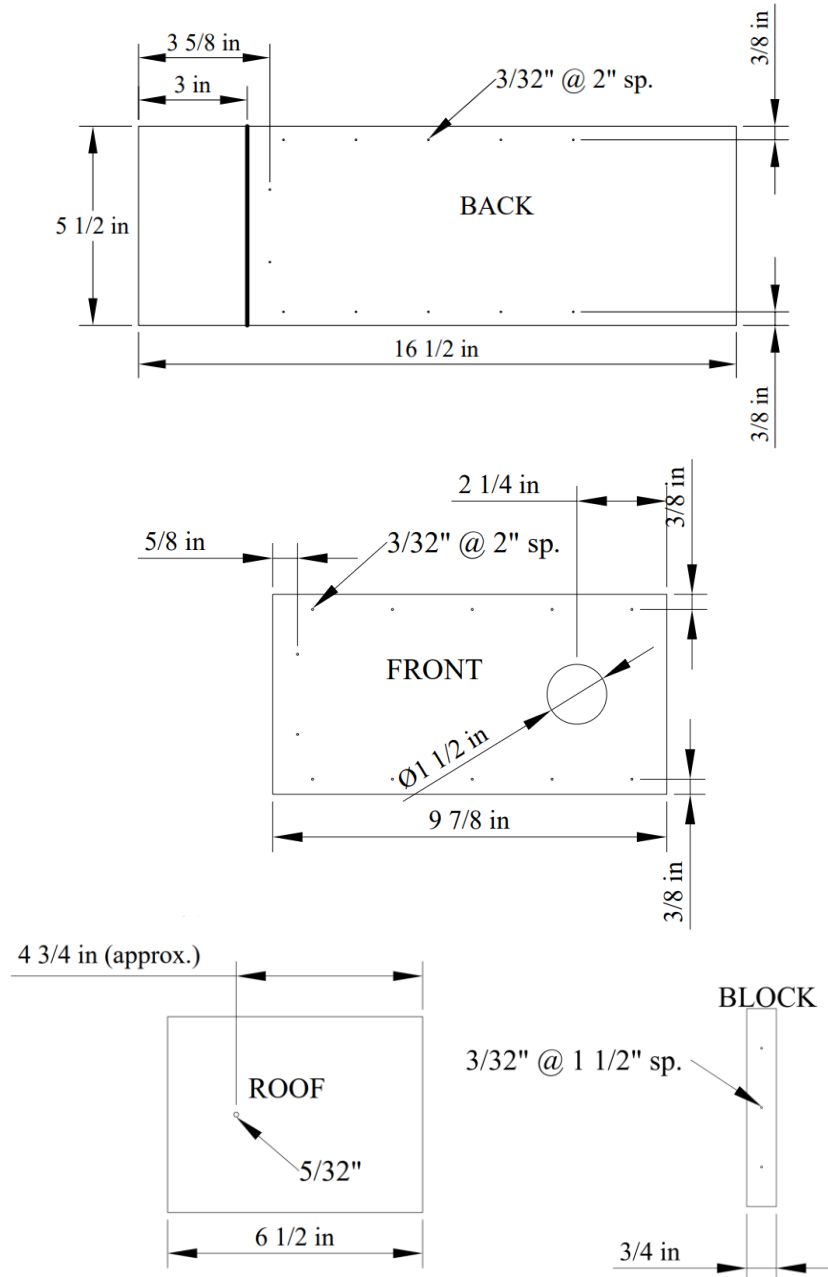
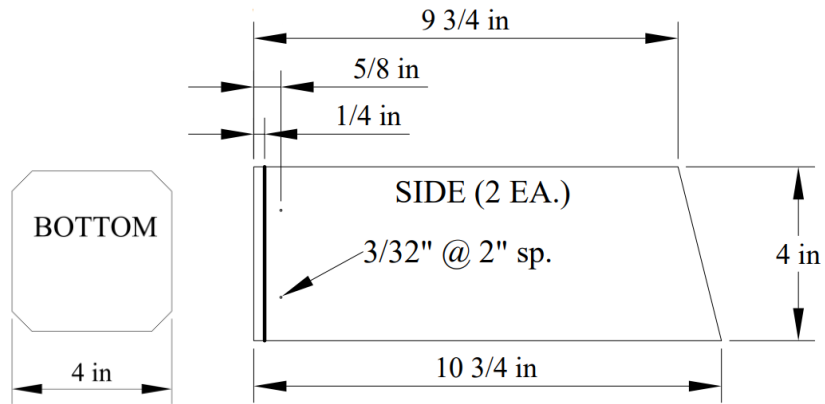


Figure 2. Five and one-half inch wide pieces



Drill 3/32" holes in the boards in the locations shown in the Figures. This will make it easy for the children to properly position and drive the nails. Draw the lines shown on the Back and Side pieces. These will help align the floor.

Drill a 1-1/2" diameter entry hole in the position shown in the Front board.

The marked and drilled pieces are shown in Figure 4.



Figure 4. Pieces prepared for assembly

## Birdhouse Assembly

The children should do as much of the assembly as possible. Align the Bottom with lines on the two Side pieces and clamp as shown in Figure 5.



Figure 5. Clamp the sides to the floor

Place the Front on the assembly shown in Figure 5. Place a clamp near the top to ensure that the Sides are properly aligned. Drive 12 nails as shown in Figure 6.



Figure 6. Attach the front

Nail the two Sides to the Bottom (Figure 7).



Figure 7. Nail the bottom to the sides

Place the assembly in Figure 7 on the Back. Ensure that the assembly is aligned with the line on the Back as shown in Figure 8. Clamp to maintain this position while flipping the assembly over to nail the Back in place (Figure 9).



Figure 8. Align the Back on the bird house



Figure 9. Attach the Back

Set the roof piece on top of the birdhouse and secure the  $\frac{3}{4}$ " block above it by driving in the three nails.



Figure 10. Nail Block to Back above Roof

Drill a 5/32" hole through the Roof aligned with the center of the Front board. Insert the screw into the predrilled hole and secure the roof (Figure 11).



Figure 11. Secure the roof with a screw

Pro Tip: Install bluebird houses on 4x4 post so entrance is 5' above ground level facing east or southeast, in open area at least 100' from trees.